

PTVA120121M

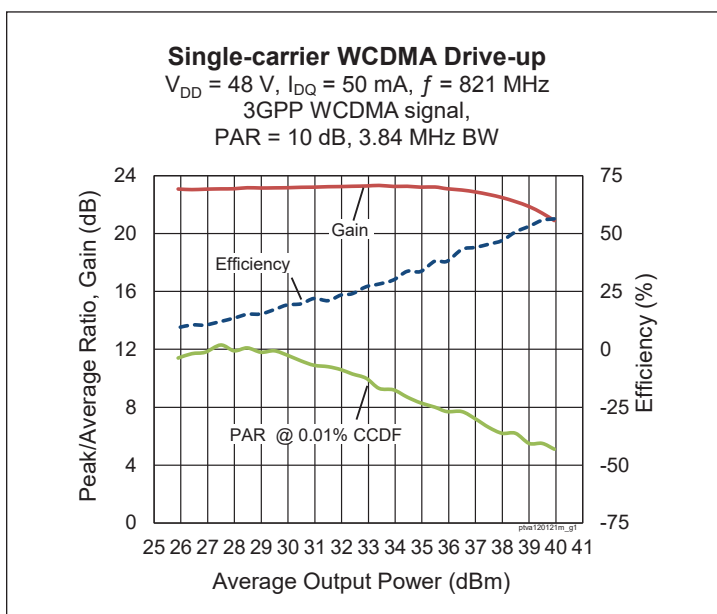
Thermally-Enhanced High Power RF LDMOS FET 12 W, 50 V, 500 – 1400 MHz

Description

The PTVA120121M LDMOS FET is a 12-watt LDMOS FET designed for use in power amplifier applications in the 500 MHz to 1400 MHz frequency band. Features include high gain and a thermally-enhanced, surface-mount package. Manufactured with Wolfspeed's advanced LDMOS process, this device provides excellent thermal performance and superior reliability.



PTVA120121M
Package PG-SON-10



Features

- Unmatched
- Target pulsed CW performance at 821 MHz, 48 V
 - Output power = 12 W P_{1dB}
 - Efficiency = 62%
 - Gain = 22 dB
- Capable of withstanding a 10:1 load mismatch at 50 V, 12 W (CW) output power
- Integrated ESD protection
- Human Body Model class 1B (per ANSI/ESDA/ JEDEC JS-001)
- Excellent thermal stability
- Pb-free and RoHS-compliant

RF Characteristics

Single-carrier WCDMA Characteristics (tested in Wolfspeed production test fixture)

$V_{DD} = 48\text{ V}$, $I_{DQ} = 35\text{ mA}$, $P_{OUT} = 3.5\text{ W avg}$, $f = 821\text{ MHz}$, 3GPP WCDMA signal: 3.84 MHz bandwidth, 10 dB PAR @ 0.01% CCDF.

Characteristic	Symbol	Min	Typ	Max	Unit
Gain	G_{ps}	20.5	21.5	—	dB
Drain Efficiency	η_D	35.5	38.5	—	%
Adjacent Channel Power Ratio	ACPR	—	-33.5	-31.5	dBc

All published data at $T_{CASE} = 25^\circ\text{C}$ unless otherwise indicated

ESD: Electrostatic discharge sensitive device—observe handling precautions!

DC Characteristics (each side)

Characteristic	Conditions	Symbol	Min	Typ	Max	Unit
Drain-Source Breakdown Voltage	$V_{GS} = 0\text{ V}$, $I_{DS} = 10\text{ mA}$	$V_{(BR)DSS}$	105	—	—	V
Drain Leakage Current	$V_{DS} = 50\text{ V}$, $V_{GS} = 0\text{ V}$	I_{DSS}	—	—	0.1	μA
	$V_{DS} = 105\text{ V}$, $V_{GS} = 0\text{ V}$	I_{DSS}	—	—	1.0	μA
Gate Leakage Current	$V_{GS} = 10\text{ V}$, $V_{DS} = 0\text{ V}$	I_{GSS}	—	—	0.1	μA
On-State Resistance	$V_{GS} = 10\text{ V}$, $V_{DS} = 0.1\text{ V}$	$R_{DS(on)}$	—	2.96	—	Ω
Operating Gate Voltage	$V_{DS} = 48\text{ V}$, $I_{DQ} = 0.05\text{ A}$	V_{GS}	3	3.57	4	V

Maximum Ratings

Parameter	Symbol	Value	Unit
Drain-Source Voltage	V_{DSS}	105	V
Gate-Source Voltage	V_{GS}	-6 to +12	V
Operating Voltage	V_{DD}	0 to +55	V
Junction Temperature	T_J	225	$^{\circ}\text{C}$
Storage Temperature Range	T_{STG}	-65 to +150	$^{\circ}\text{C}$

Thermal Characteristics

Parameter	Symbol	Value	Unit
Thermal Resistance ($T_{CASE} = 70^{\circ}\text{C}$, 13 W CW)	$R_{\theta JC}$	4.9	$^{\circ}\text{C/W}$

Moisture Sensitivity Level

Level	Test Standard	Package Temperature	Unit
3	IPC/JEDEC J-STD-020	260	$^{\circ}\text{C}$

Ordering Information

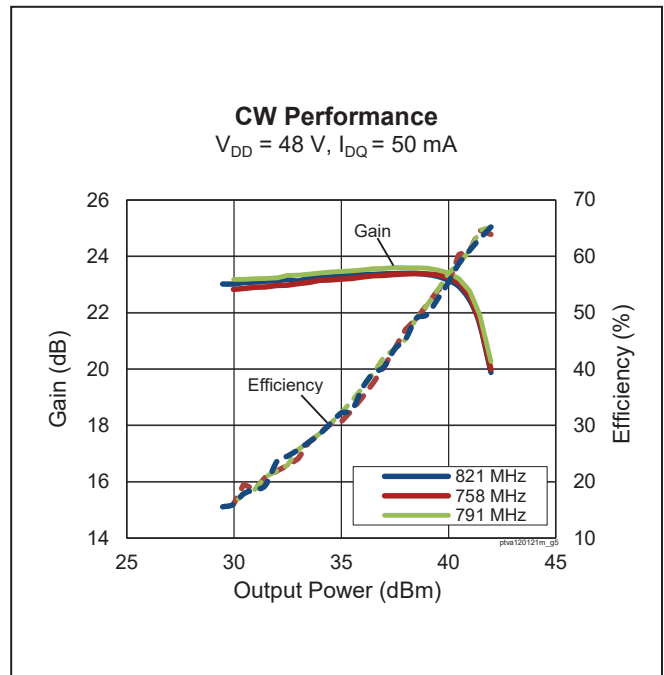
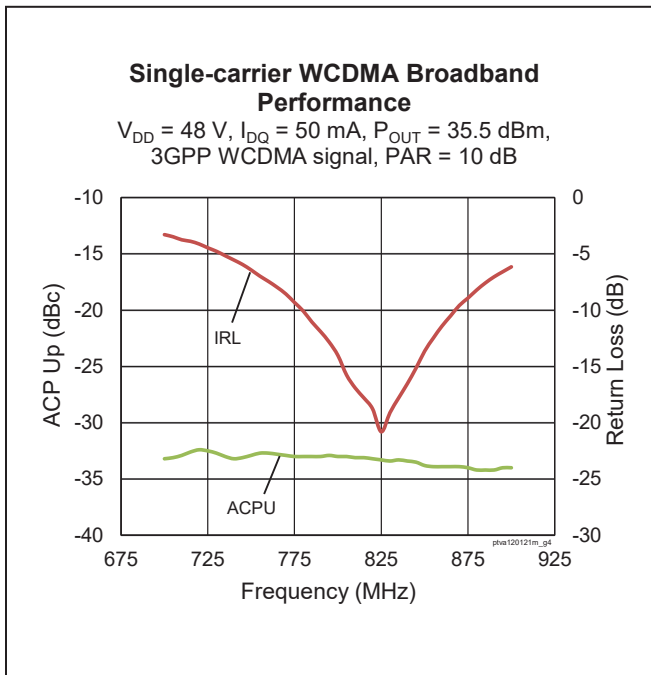
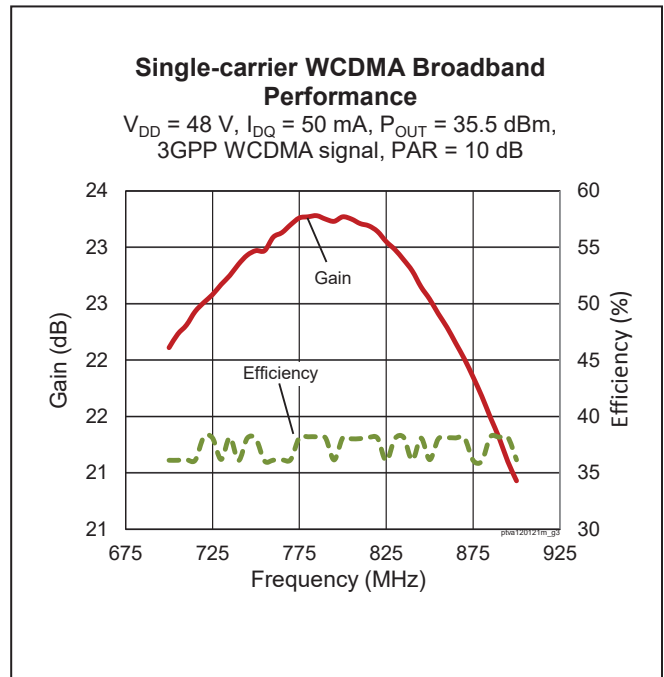
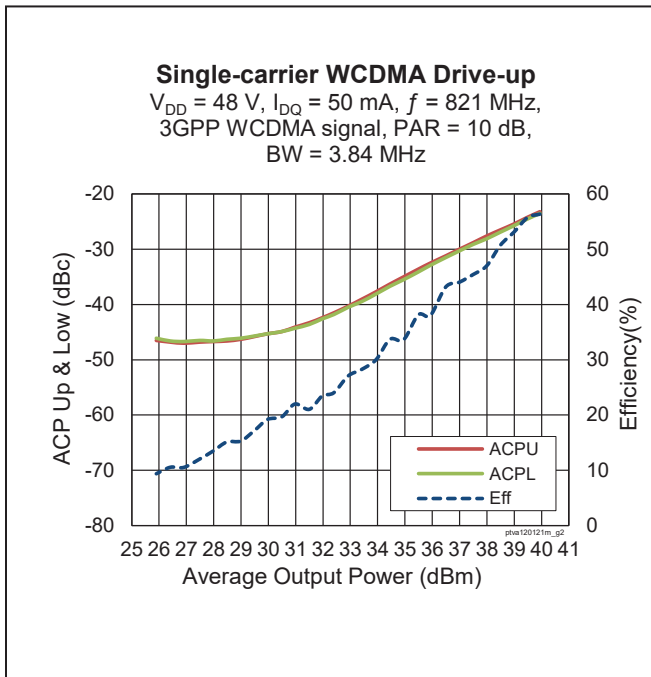
Type and Version	Order Code	Package Description	Shipping
PTVA120121M V1 R1K	PTVA120121M-V1-R1K	PG-SON-10, molded plastic, SMD	Tape & Reel, 1,000 pcs

Evaluation Boards

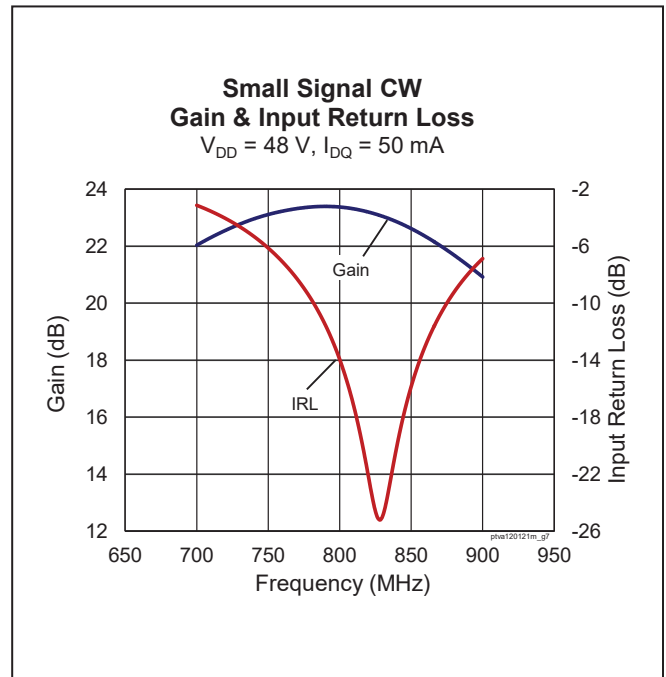
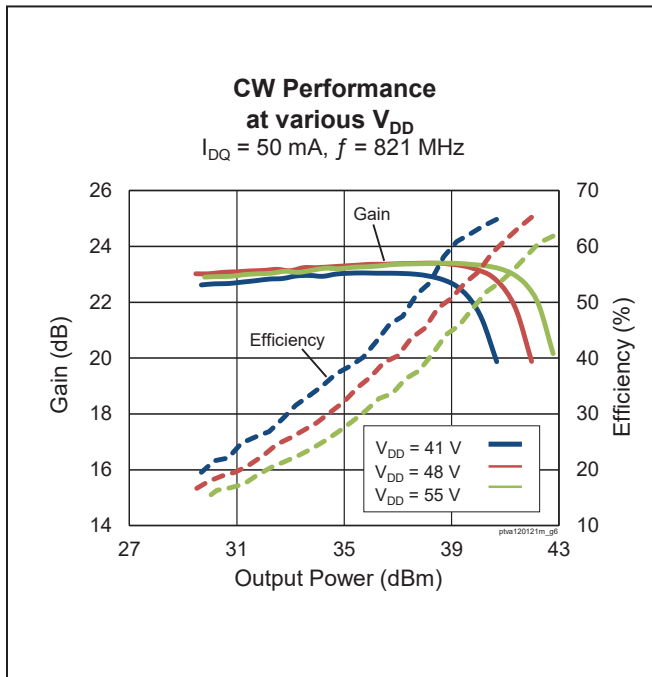
Order Code	Frequency	Description
LTN/PTVA120121M V1	758 – 821 MHz	Class AB, RO4350
LTN/PTVA120121M E2	1200 – 1400 MHz	Class AB, RO3010
LTN/PTVA120121M E3	960 – 1215 MHz	Class AB, RO3010



Typical RF Performance (data taken in production test fixture)



Typical RF Performance (cont.)

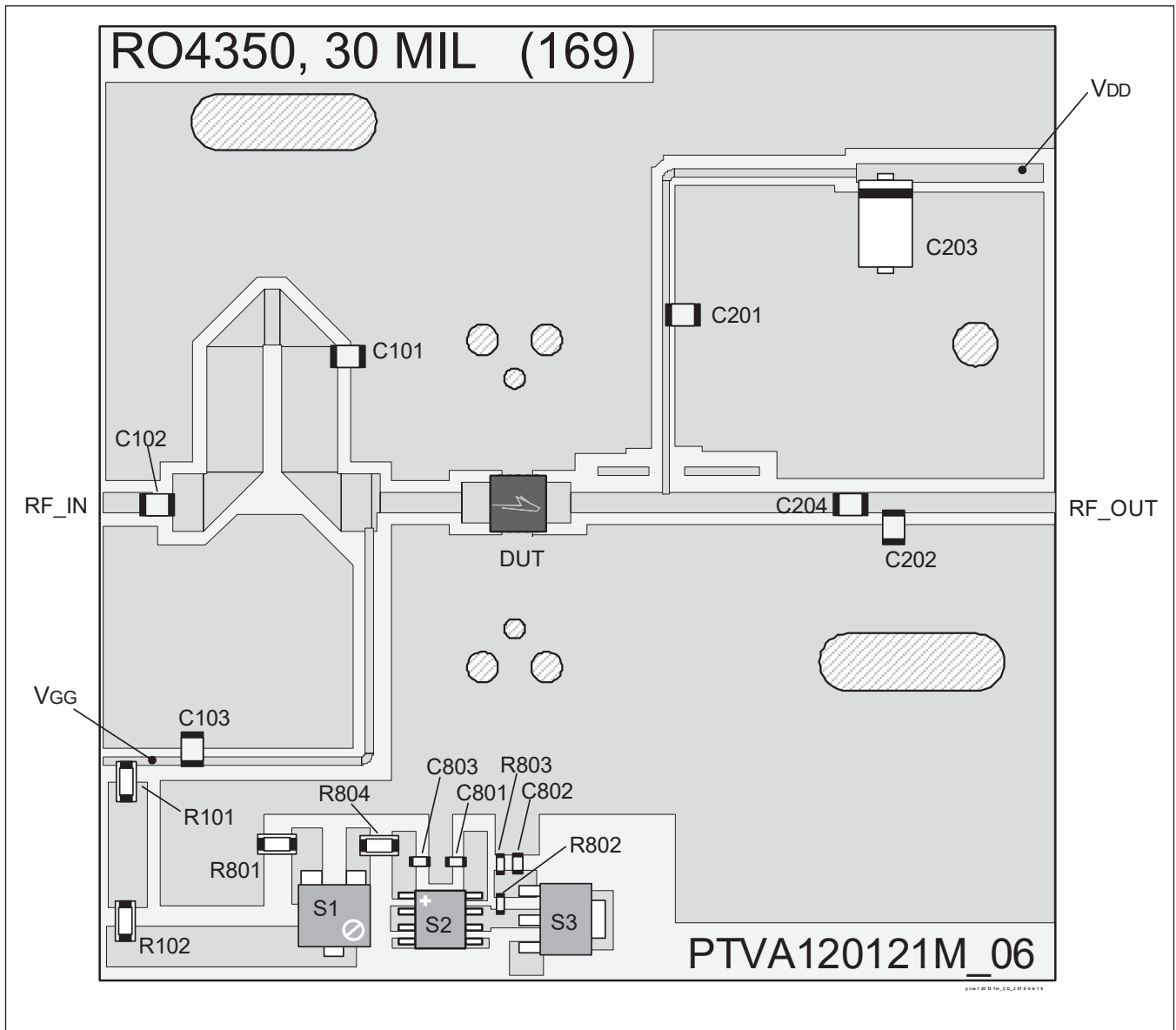


Load Pull Performance

Load Pull Performance – CW signal: 48 V, $I_{DQ} = 36 \text{ mA}$

Freq [MHz]	Z_s [Ω]	P_{1dB}					P_{1dB}				
		Z_I [Ω]	Gain [dB]	P_{OUT} [dBm]	P_{OUT} [W]	PAE [%]	Z_I [Ω]	Gain [dB]	P_{OUT} [dBm]	P_{OUT} [W]	PAE [%]
758	6.22+j14	44.9+j21.8	22.64	41.69	14.76	66.8	26.9+j64.4	25.3	37.43	5.53	84.0
791	6.07+j12	36.2+j14.5	21.85	42.00	15.93	63.0	23+j62.4	25	36.97	4.97	81.6
821	6.14+j10.9	35+j14.5	21.64	41.94	15.62	63.0	14.8+j50.4	24.9	36.60	4.55	80.2

Reference Circuit, 758 – 821 MHz



Reference circuit assembly diagram (not to scale)

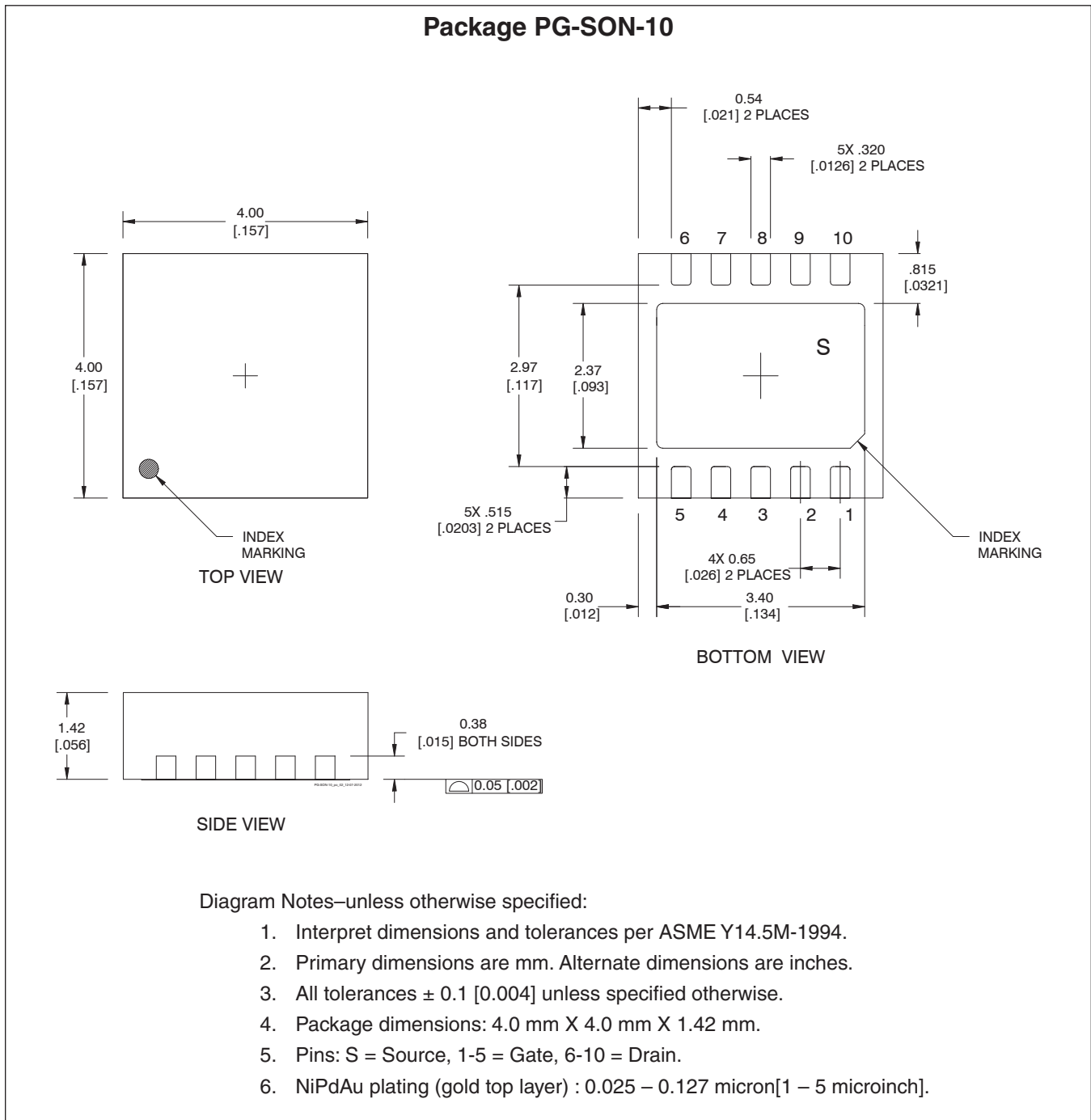
Reference Circuit (cont.)**Reference Circuit Assembly**

DUT	PTVA120121M V1
Test Fixture Part No.	LTN/PTVA120121M V1
PCB	Rogers 4350, 0.762 mm [0.030"] thick, 2 oz. copper, $\epsilon_r = 3.66$, $f = 758 - 821$ MHz
Find Gerber files for this test fixture on the Wolfspeed Web site at www.wolfspeed.com/RF	

Components Information

Component	Description	Manufacturer	P/N
Input			
C101	Capacitor, 6.8 pF	ATC	ATC100B6R8CW500XB
C102, C103	Capacitor, 47 pF	ATC	ATC100B470KW500XB
R101	Resistor, 10 ohms	Panasonic Electronic Components	ERJ-8GEYJ100V
R102	Resistor, 200 ohms	Panasonic Electronic Components	ERJ-8GEYJ221V
C801, C802, C803	Capacitor, 1000 pF	Panasonic Electronic Components	ECJ-1VB1H102K
R801	Resistor, 10 ohms	Panasonic Electronic Components	ERJ-8GEYJ100V
R802	Resistor, Chip 1.2K ohms	Panasonic Electronic Components	ERJ-3GEYJ122V
R803	Resistor, Chip 1.3K ohms	Panasonic Electronic Components	ERJ-3GEYJ132V
R804	Resistor, 100 ohms	Panasonic Electronic Components	ERJ-8GEYJ101V
S1	Resistor, Variable 2K ohms	Bourns Inc.	3224W-1-202E
S2	Voltage Regulator	Texas Instruments	LM78L05ACM
S3	Transistor	Infineon Technologies	BCP56
Output			
C201, C204	Capacitor, 47 pF	ATC	ATC100B470KW500XB
C202	Capacitor, 0.9 pF	ATC	ATC100B0R9CW500XB
C203	Capacitor, 10 μ f	AVX / Geratte	TPSE106M050R0400

Package Outline Specifications



Revision History

Revision	Date	Data Sheet Type	Page	Subjects (major changes since last revision)
01	2014-10-07	Advance	All	Data Sheet reflects advance specification for product development
02	2016-07-14	Production	All	Data Sheet reflects released product specification
02.1	2017-02-03	Production	2	Update operating voltage and junction temperature
03	2018-06-15	Production	All	Converted to Wolfspeed Data Sheet

For more information, please contact:

4600 Silicon Drive
 Durham, North Carolina, USA 27703
www.wolfspeed.com/RF

Sales Contact
RFSales@wolfspeed.com

RF Product Marketing Contact
RFMarketing@wolfspeed.com
 919.407.7816

Notes

Disclaimer

Specifications are subject to change without notice. Cree, Inc. believes the information contained within this data sheet to be accurate and reliable. However, no responsibility is assumed by Cree for any infringement of patents or other rights of third parties which may result from its use. No license is granted by implication or otherwise under any patent or patent rights of Cree. Cree makes no warranty, representation or guarantee regarding the suitability of its products for any particular purpose. "Typical" parameters are the average values expected by Cree in large quantities and are provided for information purposes only. These values can and do vary in different applications and actual performance can vary over time. All operating parameters should be validated by customer's technical experts for each application. Cree products are not designed, intended or authorized for use as components in applications intended for surgical implant into the body or to support or sustain life, in applications in which the failure of the Cree product could result in personal injury or death or in applications for planning, construction, maintenance or direct operation of a nuclear facility.